

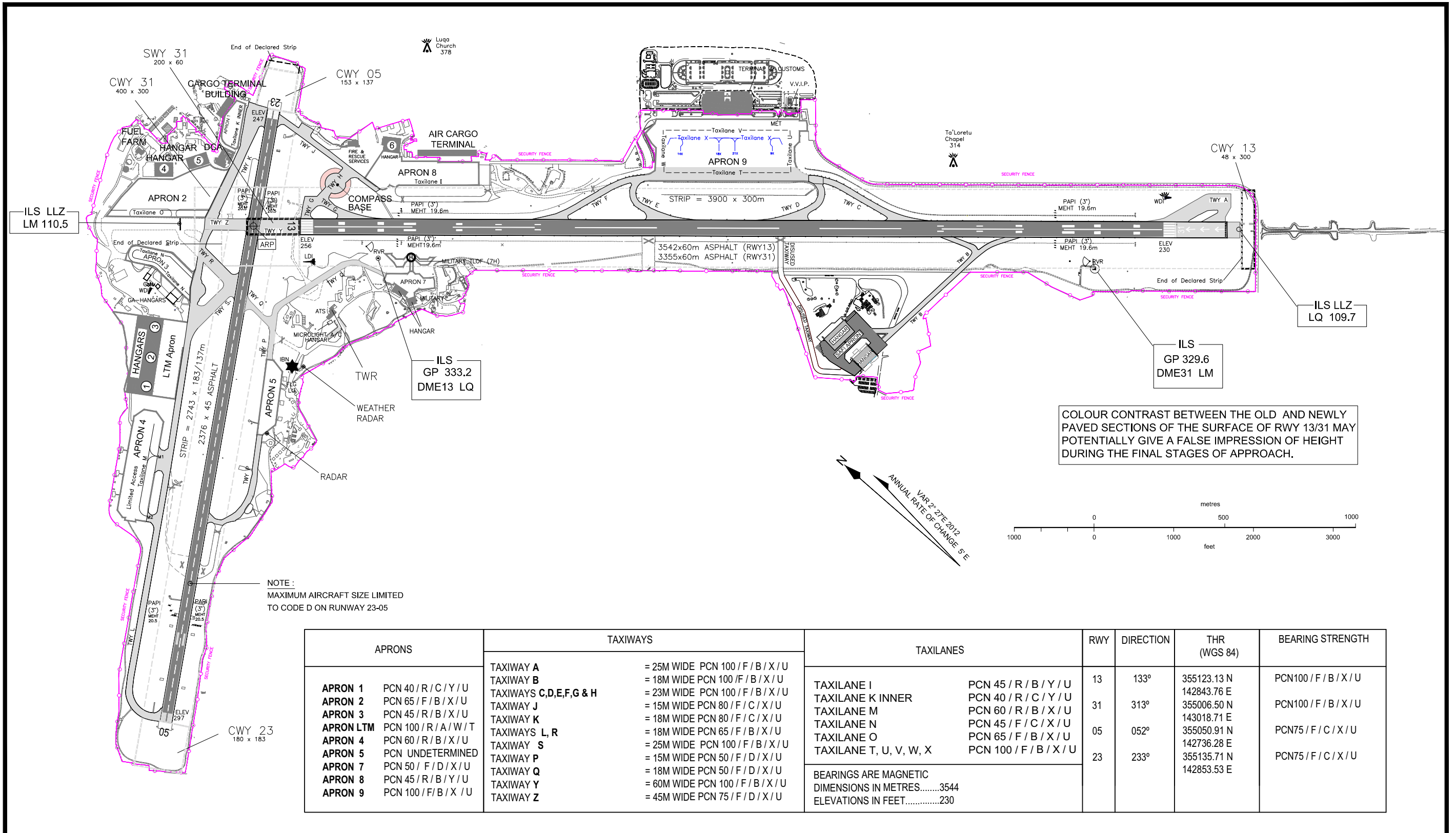
AERODROME CHART - ICAO

ARP 35°51'27" N
14°28'39" E

ELEV 300 feet

TWR 135.1
GROUND 121.6

MALTA / LUQA



Airfield Drawing Office ref: MIACA-855-2003
MALTA INTERNATIONAL AIRPORT plc
Technical Services Division

THIS PAGE INTENTIONALLY LEFT BLANK